



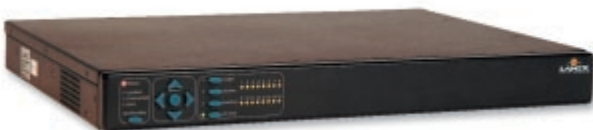
Digital Recording Tools with a High Net Worth. Affordable Price.

The **LANEX**netDVR. Networked Surveillance.

The **LANEX** netDVR digital video recorder is a remarkable advancement in digital security technology. This feature-rich DVR is remotely accessible, that means you can review video and change settings from any location. With its large storage capacity there is no need to swap tapes or other media. Once you install a Lanex netDVR, you never have to touch it again.

16 Camera Digital Video Recorder

- Embedded Operating System with Remote Access
- Multi-screen Display
- ATM / Teller Interface
- Programmable Bandwidth Limit
- Migratable Interface Technology
- 15 FPS
- 80-1000 GB Video Storage
- *SMARTMotion* — Motion Prompted Archiving
- Easily switched from Serial to IP



VERINT
LANEX Product Group

The LANEXnetDVR.

Why Lanex?

Innovation: Lanex continues to lead the industry in new product innovation and system capability.

Installed Base: With an installed base in excess of 20,000 systems, Lanex leads the way in conversions from VCR to digital video technology.

Information Integration: Lanex has developed the industry's broadest line of auxiliary information integration components. From ATM data capture to Ethernet Transaction Analyzers, Lanex has a data capture solution for your system.

Application Engineering: With extensive in-house software and hardware engineering capabilities, Lanex continues to help our customers by providing project specific, engineered solutions.

Feature-Rich with System Simplicity: Customers consistently rank Lanex DVRs the highest in the industry for system capability combined with ease of installation, ease of programming and ease of operation.

Embedded Operating System: The Lanex strategy of robust, embedded operating systems combined with remotely distributed image storage has been confirmed by rapid industry acceptance of Lanex technology.

Remote Access with HealthCheck: Secure programming and image retrieval makes system management simply effective. When combined with "client" initiated remote verification of system integrity, Lanex DVRs provide the highest level of on-line performance.

Image Integrity and FBI Compliance: Our WaveletPlus compression methodology ensures unalterability and image integrity (Lanex technology complies with FBI recommendations for digital image evidentiary requirements).

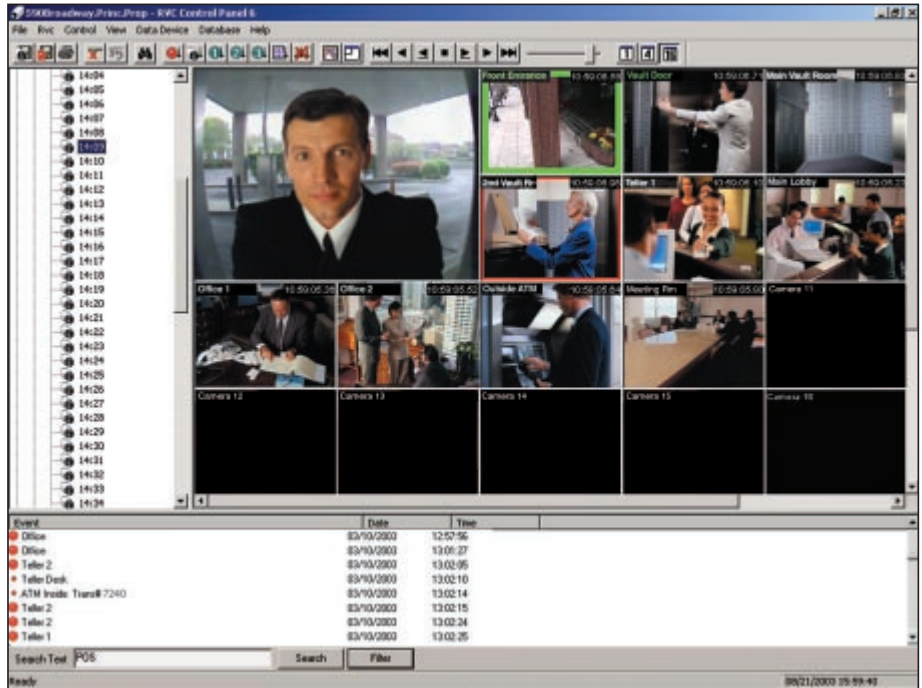


Monitor Your System with HealthCheck

This unique LANEX feature allows you to customize a schedule of tests that will quickly detect video, connection, disk and sensor problems. Whether you have one unit or one thousand units, the user-friendly interface helps you pinpoint the error so you won't miss a beat.



9105 Guilford Road • Columbia, MD 21046
301.483.8930 • 301.483.9790 fax
www.lanexdvr.com



The easy-to-use RVC Control Panel software allows you to connect to a Lanex netDVR over standard telephone lines, a network or via a local access cable. Once connected, it is easy to retrieve video or change settings.

Product Specifications: LANEXnetDVR

Frame Rate

- 7.5 FPS standard
- 15 FPS (optional)

Media

- 80-1000 GB
- Dedicated/removable archiving drive (optional)

User Interface Software

- Remote access for image retrieval and system configuration
 - Multiple screen display (one, four and 16 camera)
 - Searchable event log—time, date, number, event, transaction, etc.
 - Partitioned archiving for long and short term storage
 - Live view
 - Simultaneous recording during live view, event storage or image retrieval
 - Fully programmable events and scheduling
 - Windows 95, 98, Me, 2000/XP, NT compatible
- NEW** All Lanex hardware products are compatible with The Dellis Enterprise software solution

Video Inputs

- 16 cameras
- NTSC/PAL

Retrieval Transmission

- Ethernet 10/100 Base T
- Dial up modem (optional)
- RS 232 local access

Remote System Verification

- HealthCheck compatible

Compression Format

- WaveletPlus
- Unalterable image format (UIF)

Image Quality

- User selectable (Hi/Med/Lo)
- 320 x 240 resolution standard
- 640 x 480 resolution (optional)

Monitor Output

- Programmable monitor output

Alarm/Event Contacts

- 16-user configurable input contacts
- 2-user configurable output contacts

Motion Detection

- Motion prompted archiving (MPA)

Data Input

- Dual RS 232 data inputs

Data Transaction

- Digitized data capture
- Sidebar data display

Data Interfaces

- Ethernet Transaction Analyzer (ETA)
- ATM/Teller - IP and Serial
- Access control

Physical

- 17" wide x 11.5" deep x 1.75" high
- 10 lbs.
- 40-120° F operating environment
- Wall, shelf or rack mounting

Electrical

- 100-120 VAC / 200-240 VAC, 60/50 Hz