

NETSCAN ASSET MANAGER

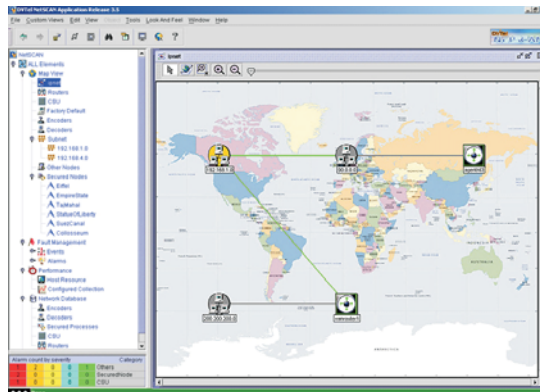
SECURITY NETWORK MANAGEMENT SYSTEM

PRODUCT DESCRIPTION:

The NetSCAN Asset Manager is the networking tool for the security professional. It is a powerful Network Management System designed specifically to address emerging networked security systems.

The NetSCAN Asset Manager manages multi-vendor video, access control, Intercom, visitor management and other mission critical security assets. According to user-defined policies, the NetSCAN Asset Manager continuously scans the networked security infrastructure, reporting and configuring newly installed security components while maintaining the integrity of existing systems.

Many 3rd party systems and edge devices are supported and the NetSCAN Asset Manager can be taught to monitor new systems when identified during network scanning.



KEY FEATURES AND BENEFITS

- Three levels of NetSCAN users:
 - Security Desk Operator
 - Security Administrator
 - Network Administrator
- Instant visibility to the network and state of the equipment
 - Detects and configures DVTel equipment as well as 3rd party security devices
 - Points to the root cause of problem
 - Change IP and Port addresses
 - Change logical name
 - Change protocol
- NetSCAN Asset Manager events can be sent through the SecureLink NVRS to prompt corrective action
- Administrators have access to reconfigure and reposition security devices
- IT Administrators can see what the Security Group is doing and see any network element to make provisions
- Connects directly to existing NMS products (such as HP OpenView)
- Can be used as a Network Management System

SECURITY DESK OPERATOR:

- Five levels of drill down/drill up:
 - Security Global Zone, Regions, Localities, Subnets, Devices
- Auto-Diagram: NetSCAN Asset Manager dynamically builds network topology views by "Security Device" type. Allows network routing elements to be managed by their connections to mission critical devices and security systems.
- Auto-Integrity: Continuous background scanning maintains system integrity and generates context sensitive event reports and notifications.
- Response Value to Security Desk Operator:
 - Alarm condition drill down, presenting the location configuration map with devices.
 - Points to root cause of network event so that operator can follow internal procedures to resolve

SECURITY ADMINISTRATOR:

- Configuration:
 - Systems to be classified as security objects, processes and applications on security objects to be monitored and initiate automatic software upgrades
 - NetSCAN Asset Manager user access rights
 - Event and alarm notifications to determine responses and notifications
 - Establish IP and port address range
- Auto-Discovery: Automatically scans the network for security systems and edge devices using the database of multi-vendor devices and systems.
- Manages applications, systems and services
- Log and Audits various events and faults and launches user defined dispatch mechanisms such as SNMP, beeper and email notification systems.
- Monitors recording disk space and CPU performance of mission critical servers and workstations
- Detects attempted use of unauthorized clients
- Response Value to Security Administrator:
 - Notification is sent when failed edge devices are identified so that corrective action can be taken
 - Another device can be repositioned using NetSCAN when primary device fails
 - Activate failover response plan

NETWORK ADMINISTRATOR:

- Monitor resources on a security system
 - CPU, disk and memory utilization
- Ability to do Testing and diagnostics to various security assets.
- Establish criteria for alarm notification based on informational, minor and critical
- Auto-logging, Audit and notifications: ability to log and audit various events and faults and launch user defined dispatch mechanisms such as SNMP, beeper and email notification systems.
- Response Value to Network Administrator:
 - Notification to take corrective action when there is a network equipment issue
 - Event filter threshold has been met
 - Track historical resource utilization by setting up events and filters